



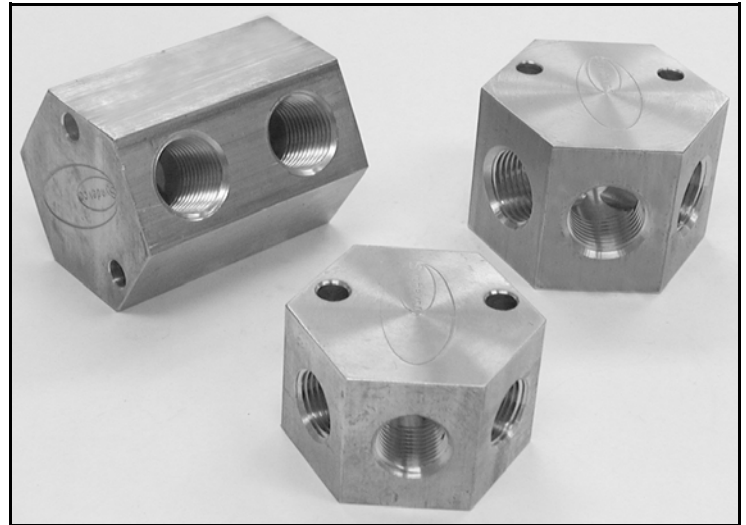
# Wye Series Manifolds

**(248) 356-2839**

*Brass compact wye manifolds with two or three secondary ports. Mounts easily with 1/4 or M6 bolts*

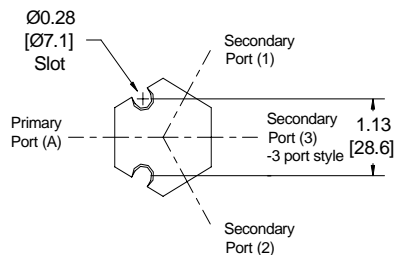
## FEATURES

- Compact size
- Easily mounts with 1/4 or M6 bolts
- Brass construction
- NPT standard
- Other thread types available
- Excellent to supply weld tips in parallel
- 1/8 to 3/4 NPT port sizes available
- Two or three secondary ports available
- Dressout assistance readily available

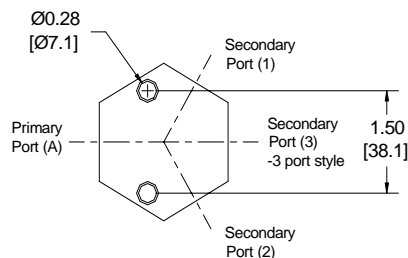


## DIMENSIONS

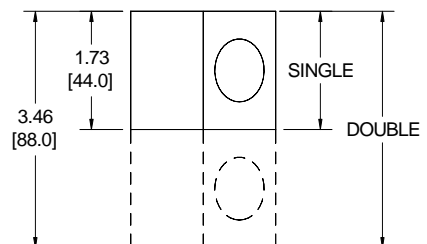
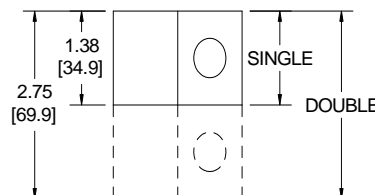
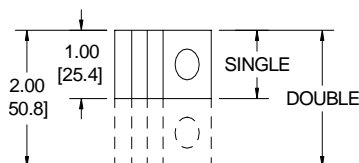
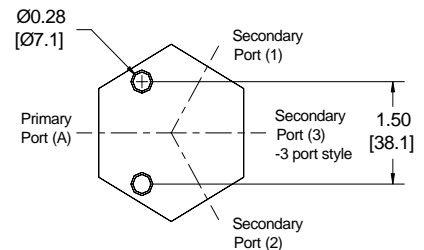
**Size A**



**Size B**



**Size C**



Units of Measure: inches [mm]

Notice: The information contained herein is, to the best of our knowledge, true, accurate and reliable. Since procedures and conditions under which these products may be used are beyond our control, no warranty, expressed or implied, is made to their performance.



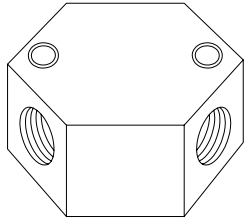
**Syndevco Inc.** Sheet: 040120  
 24205 Telegraph Rd - Southfield MI 48034  
 Toll Free: (800) 356-2839 Local: (248) 356-2839 Fax: (248) 356-0928  
 visit us at: [www.syndevco.com](http://www.syndevco.com)



# Wye Series Manifolds

## PART NUMBER SYSTEM - 2 PORT

GENERIC PART NUMBER: AABBB/C-D  
 SAMPLE PART NUMBER: 38382/2

| Size | AA<br>PRIMARY PORT SIZE |         | BBB<br>SECONDARY PORT SIZE<br>(2 port) |                    | C<br>SINGLE OR DOUBLE<br>STACK |        | D<br>ADDITIONAL OPTIONS                                   |   |
|------|-------------------------|---------|--|--------------------|--------------------------------|--------|---|---|
|      | A                       | 12      | 1/8 NPT                                | 122                | 1/8 NPT                        | None   | Single  | BSPT<br>(View of secondary ports)   |
| A    | 25                      | 1/4 NPT | 122<br>252                             | 1/8 NPT<br>1/4 NPT |                                |        |   |   |
| A    | 38                      | 3/8 NPT | 122                                    | 1/8 NPT            | 2                              | Double | Leave blank for none or call<br>a Syndevco Representative |  |
|      |                         |         | 252                                    | 1/4 NPT            |                                |        |   |   |
|      |                         |         | 382                                    | 3/8 NPT            |                                |        |   |   |
| B    | 50                      | 1/2 NPT | 122                                    | 1/8 NPT            |                                |        |   |   |
|      |                         |         | 252                                    | 1/4 NPT            |                                |        |   |   |
|      |                         |         | 382                                    | 3/8 NPT            |                                |        |   |   |
|      |                         |         | 502                                    | 1/2 NPT            |                                |        |   |   |
| B    | 75                      | 3/4 NPT | 122                                    | 1/8 NPT            |                                |        |   |   |
|      |                         |         | 252                                    | 1/4 NPT            |                                |        |   |   |
|      |                         |         | 382                                    | 3/8 NPT            |                                |        |   |   |
|      |                         |         | 502                                    | 1/2 NPT            |                                |        |   |   |
| C    | 75                      | 3/4 NPT | 752                                    | 3/4 NPT            |                                |        |   |   |

## PART NUMBER SYSTEM - 3 PORT

GENERIC PART NUMBER: AABBB/C-D  
 SAMPLE PART NUMBER: 38383/2

| Size | AA<br>PRIMARY PORT SIZE |         | BBB<br>SECONDARY PORT SIZE<br>(3 port) |                    | C<br>SINGLE OR DOUBLE<br>STACK |        | D<br>ADDITIONAL OPTIONS                                   |   |
|------|-------------------------|---------|--|--------------------|--------------------------------|--------|---|---|
|      | A                       | 12      | 1/8 NPT                                | 123                | 1/8 NPT                        | None   | Single  | BSPT<br>(View of secondary ports)   |
| A    | 25                      | 1/4 NPT | 123<br>253                             | 1/8 NPT<br>1/4 NPT |                                |        |   |   |
| A    | 38                      | 3/8 NPT | 123                                    | 1/8 NPT            | 2                              | Double | Leave blank for none or call<br>a Syndevco Representative |  |
|      |                         |         | 253                                    | 1/4 NPT            |                                |        |   |   |
| B    | 38                      | 3/8 NPT | 383                                    | 3/8 NPT            |                                |        |   |   |
| B    | 50                      | 1/2 NPT | 123                                    | 1/8 NPT            |                                |        |   |   |
|      |                         |         | 253                                    | 1/4 NPT            |                                |        |   |   |
|      |                         |         | 383                                    | 3/8 NPT            |                                |        |   |   |
| C    | 50                      | 1/2 NPT | 503                                    | 1/2 NPT            |                                |        |   |   |
| B    | 75                      | 3/4 NPT | 123                                    | 1/8 NPT            |                                |        |   |   |
|      |                         |         | 253                                    | 1/4 NPT            |                                |        |   |   |
|      |                         |         | 383                                    | 3/8 NPT            |                                |        |   |   |
| C    | 75                      | 3/4 NPT | 503                                    | 1/2 NPT            |                                |        |   |   |

Notice: The information contained herein is, to the best of our knowledge, true, accurate and reliable. Since procedures and conditions under which these products may be used are beyond our control, no warranty, expressed or implied, is made to their performance.



**Syndevco Inc.**

Sheet: 040120

24205 Telegraph Rd - Southfield MI 48034

Toll Free: (800) 356-2839 Local: (248) 356-2839 Fax: (248) 356-0928

visit us at: [www.syndevco.com](http://www.syndevco.com)