



SC Series Star Clamp

(248) 356-2839

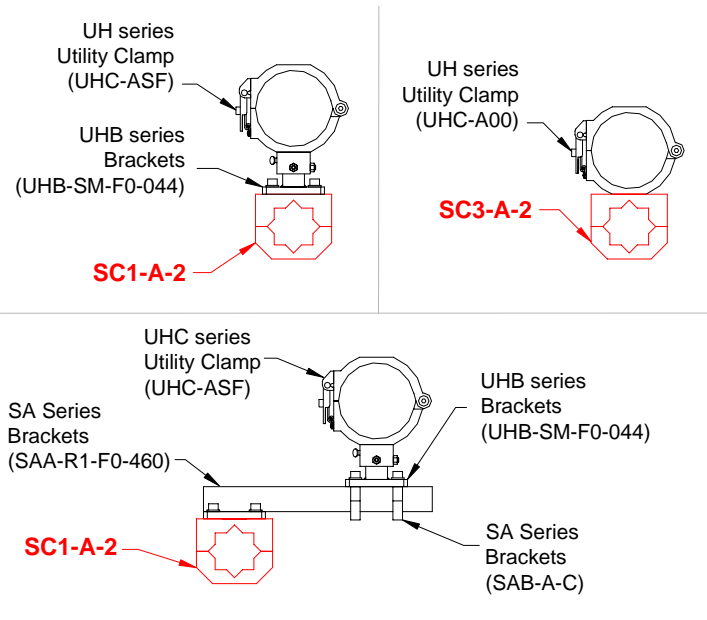
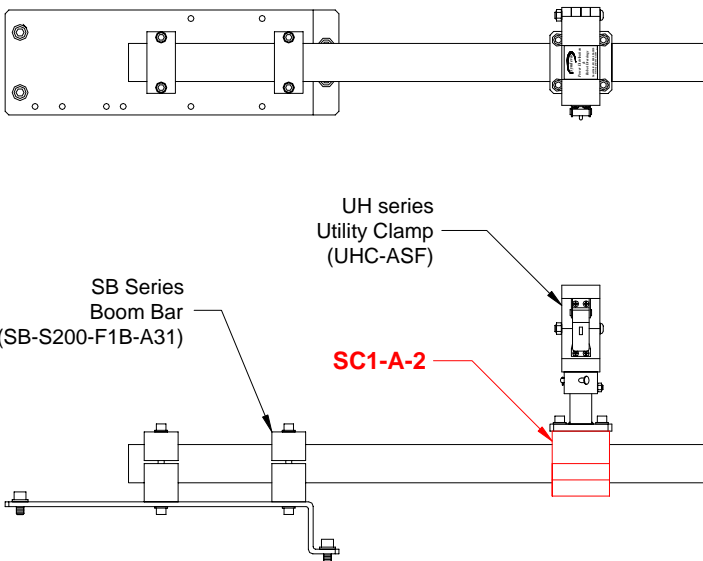
Flexibility of mounting every 45 degrees around a boom bar along with various mounting of other clamps and brackets

FEATURES

- Light weight aluminum construction
- Anodized finish
- Mounts to a 2 inch square boom bar
- Position every 45 degrees
- Angled bottom option for tight areas
- Mount UH series Utility Clamps
- Dressout service readily available
- ‘Value Added’ services available



USAGE EXAMPLES - not limited to



Notice: The information contained herein is, to the best of our knowledge, true, accurate and reliable. Since procedures and conditions under which these products may be used are beyond our control, no warranty, expressed or implied, is made to their performance.



Syndevco Inc.

Sheet: 041213

24205 Telegraph Rd - Southfield MI 48034

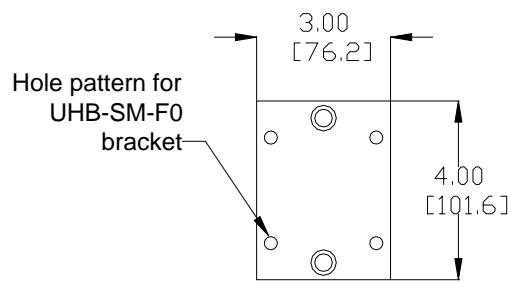
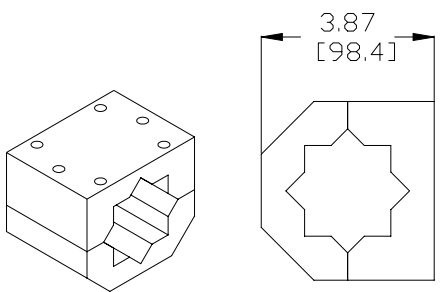
Toll Free: (800) 356-2839 Local: (248) 356-2839 Fax: (248) 356-0928

visit us at: www.syndevco.com



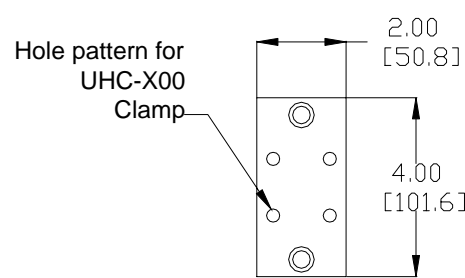
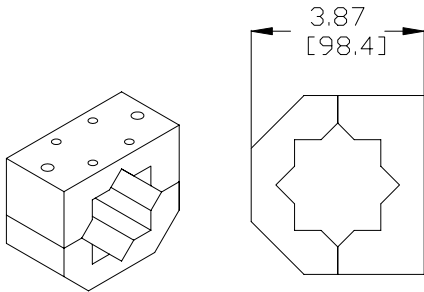
SC Series Star Clamp

DIMENSIONS & PART NUMBERING



Units of Measure: inches
[mm]

Part Number: SC1-A-2
Description: Mounts with UHB series brackets or SA series brackets



Part Number: SC3-A-2
Description: Mounts with UHC-A00 or UHC-B00 clamp

Please see our other products
for further design solutions



RF Series
Transgun Cables



UH series Utility Clamp



GTP Series
Power Distribution Boxes

Notice: The information contained herein is, to the best of our knowledge, true, accurate and reliable. Since procedures and conditions under which these products may be used are beyond our control, no warranty, expressed or implied, is made to their performance.



Syndevco Inc.
ISO-9001-2000
Certificate # A10995

Syndevco Inc.

Sheet: 041213

24205 Telegraph Rd - Southfield MI 48034

Toll Free: (800) 356-2839 Local: (248) 356-2839 Fax: (248) 356-0928

visit us at: www.syndevco.com