



LH Series Clamp Inserts

(248) 356-2839

Inserts used in conjunction with LH Series Clamps, have variety of inner diameters and configurations

FEATURES

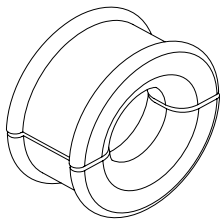
- Use with LH Series Utility Clamps
- Hard and Soft materials available
- Hard Material– 2 pc design
- Soft Material– 1 pc (pac-man) design
- Single or Dual hole configurations available
- Corrugated tube configurations available
- Custom requirements easily met
- Robot Dress assistance readily available
- ‘Value added’ services available
- Part numbers available for complete assemblies



AVAILABLE CONFIGURATIONS

Single Hole Insert

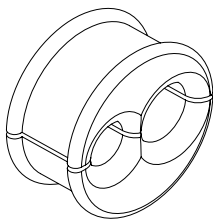
(Available in hard or soft material)



Hard material– 2 pc design shown

Dual Hole Insert

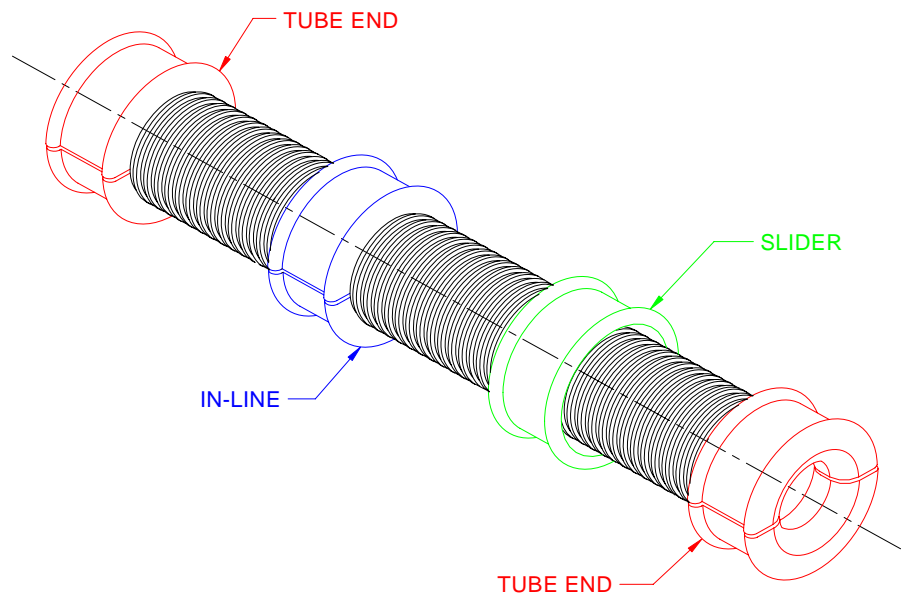
(Available in hard or soft material)



Hard material– 2 pc design shown

Corrugated Tube Inserts

(Available in hard material only)



Notice: The information contained herein is, to the best of our knowledge, true, accurate and reliable. Since procedures and conditions under which these products may be used are beyond our control, no warranty, expressed or implied, is made to their performance.



Syndevco Inc.
ISO-9001-2000
Certificate # A10995

Syndevco Inc.

Sheet: 070130

24205 Telegraph Rd - Southfield MI 48034

Toll Free: (800) 356-2839 Local: (248) 356-2839 Fax: (248) 356-0928

visit us at: www.syndevco.com



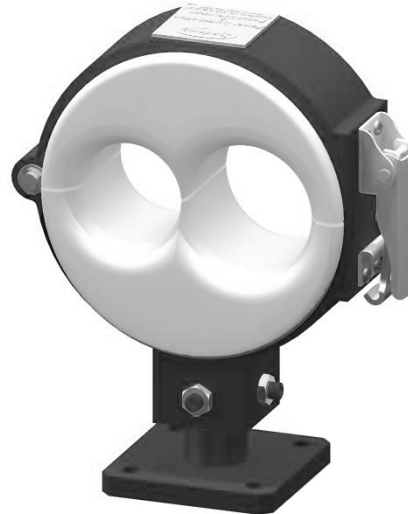
LH Series Clamp Inserts

PART NUMBERING

LHI-A Inserts	
Material	
110 Shore A Rigid	
Color	
White	
Size Increments	
(I.D.) mm every 2 mm (even numbers)	
Single Hole	
Part Numbering	
LHI-AXX(mm)	
Examples	
LHI-A70 LHI-A80	
Dual Hole	
Part Numbering (small hole first)	
LHI-AXX(mm)/YY(mm)	
Examples	
LHI-A48/60 LHI-A50/65	
Corr Tubing Ends * (95 PMA)	Corr Tubing Ends + (95 Reiku)
Part Numbering	Part Numbering
LHI-AC95-XX(mm)/YY(mm)	LHI-AD70-XX(mm)/YY(mm)
Examples	Examples
LHI-AC95-60 LHI-AC95-48/60	LHI-AD95-60 LHI-AD95-48/60
Corr Tubing In-Line * (95 PMA)	Corr Tubing In-Line + (95 Reiku)
Part Numbering	Part Numbering
LHI-AITube Size	LHI-AJTube Size
Examples	Examples
LHI-AI95	LHI-AJ95
Corr Tubing Slider * (95 PMA)	Corr Tubing Slider + (95 Reiku)
Part Numbering	Part Numbering
LHI-ASTube Size	LHI-ATTube Size
Examples	Examples
LHI-AS95	LHI-AT95

LHI-B Inserts	
Material	
60 Shore A Plyable	
Color	
Yellow	
Size Increments	
(I.D.) mm every 5 mm (0 and 5)	
Single Hole	
Part Numbering	
LHI-BXX(mm)	
Examples	
LHI-B65 LHI-B80	
Dual Hole	
Part Numbering (small hole first)	
LHI-AXX(mm)/YY(mm)	
Examples	
LHI-B45/60 LHI-B50/65	

USAGE EXAMPLE



LHI-A48/60 Insert shown with a
LHC-AF-SB-F0-057 Utility Clamp

NOTES:

* SMALLER CORRUGATED TUBE INSERTS ARE AVAILABLE BY REQUEST (70, 56, 48)

+ SMALLER CORRUGATED TUBE INSERTS ARE AVAILABLE BY REQUEST (70, 52)

Notice: The information contained herein is, to the best of our knowledge, true, accurate and reliable. Since procedures and conditions under which these products may be used are beyond our control, no warranty, expressed or implied, is made to their performance.



Syndevco Inc.
ISO-9001-2000
Certificate # A10995

Syndevco Inc.

Sheet: 070130

24205 Telegraph Rd - Southfield MI 48034

Toll Free: (800) 356-2839 Local: (248) 356-2839 Fax: (248) 356-0928

visit us at: www.syndevco.com